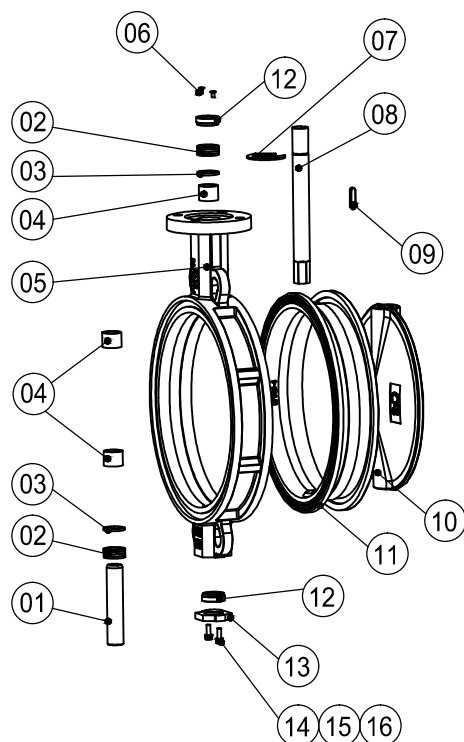


1-Exploded view DN400~DN800



16	Washer	4
15	Elastic washer	4
14	Bolt	4
13	Bottom cover	1
12	Packing gland	2
11	Seat	1
10	Disc	1
09	Key	1
08	Upper shaft	1
07	Circlip	1
06	Bolts	2
05	Body	1
04	Bushing	3
03	Packing gasket	2
02	Packing	8
01	Lower shaft	1
NO.	PART	QTY

2-Assembly

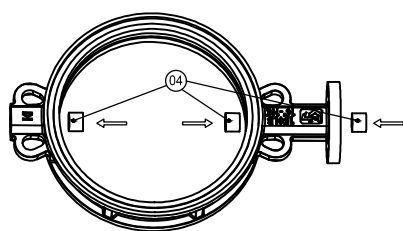


Figure 1

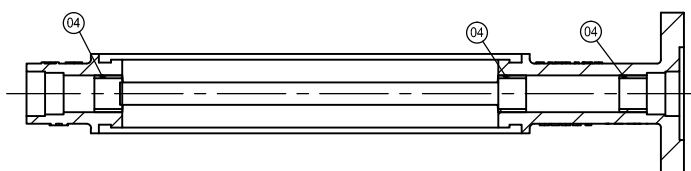


Figure 2

(1) As shown in Figure 1, use a top rod and a hammer to knock the bushing into the shaft hole of the bo so that the bushing is installed to the position shown in Figure 2.

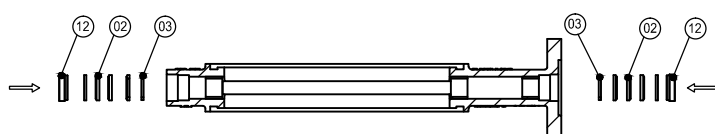


Figure 3

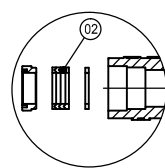


Figure 4



(2) As shown in Figure 3, into the upper and lower shaft holes, are placed by washer, packing, packing gla Note that the order of packing groups is shown in Figure 4



Figure 5

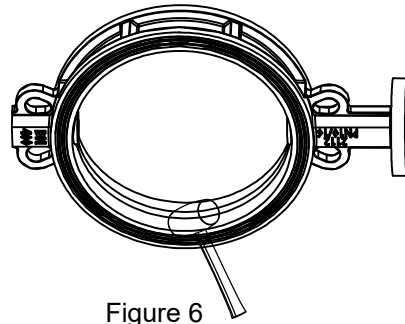


Figure 6

(3) Twist one end of the valve seat shaft hole into the corresponding groove of the valve body (as shown in Figure 5 make sure that the seat hole is coaxially centered with the body hole, press the seat at the shaft hole into the groove, loosen the other end, and put the seat completely into the groove of the body.

Tap the surfaces of the seat with a wooden mallet (as shown in Figure 6) to ensure that the seat and the body are closely combined, and check it over.

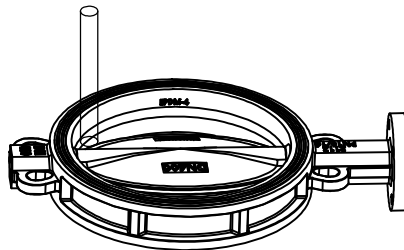


Figure 7

(4) Apply lubricating oil that has no effect on the performance of seat in both ends of the seat, shaft hol put into the disc, and adjust the horizontal level of disc with a copper rod, until the shaft hole on disc and body coaxial (as shown in Figure 7-8).

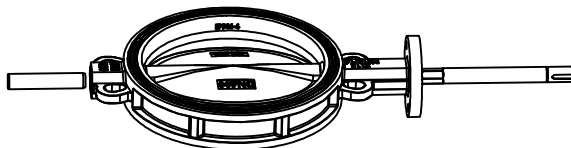


Figure 8

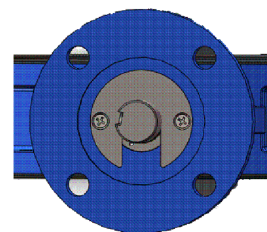


Figure 9

(5) Place the lower shaft (note that one end of the threaded hole faces out.)

Place the upper shaft, adjust the angle so that the shaft keyway is parallel to the disc, then top into the upper shaft, When the shaft is slotted and aligned with the upper flange, put in the circlip, then tap the upper shaft to the bottom.

Tighten the screws.(As shown Figure 9, it is allowed to directly hammer the shaft with a copper hammer only.

(6) Install the bottom cover and tighten the screws(with spring gaskets and flat pad

(7) Load the flat key and connect the debugging drive devi

3. The new structure can effectively prevent the problem of leakage at the upper & lower shaft hole

Remove the bolts and bottom cover

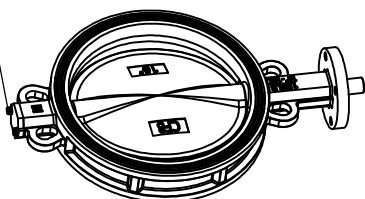


Figure 10

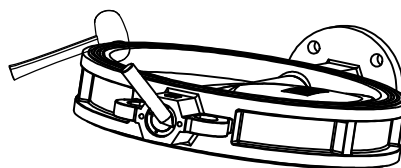


Figure 11

(1) Remove the bolts and bottom cover (as shown in Figure 10), align the packing gland bolt hole with a pun and strike to rotate the packing gland counter-clockwise to compress the packing (as shown in Figure 11), when there is no leakage, reinstall the parts back to the body.

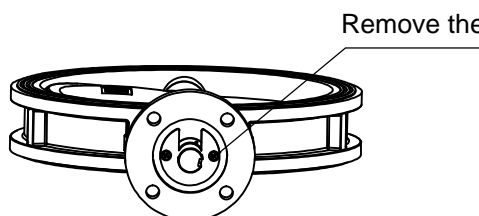


Figure 12

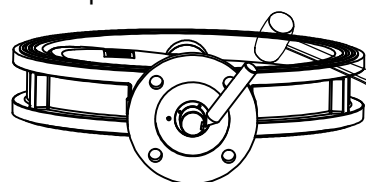
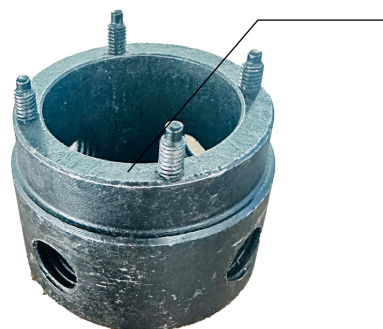


Figure 13

(2) Remove the bolts and circlip (as shown in Figure 12), align the packing gland bolt hole with a pun and strike to rotate the packing gland counter-clockwise to compress the packing (as shown in Figure 13), when there is no leakage, reinstall the parts back to the body.



Seallon can provide customized tools for free.



If not received yet the tools temporarily, please replace them with a screwdriver to perform the above operations.